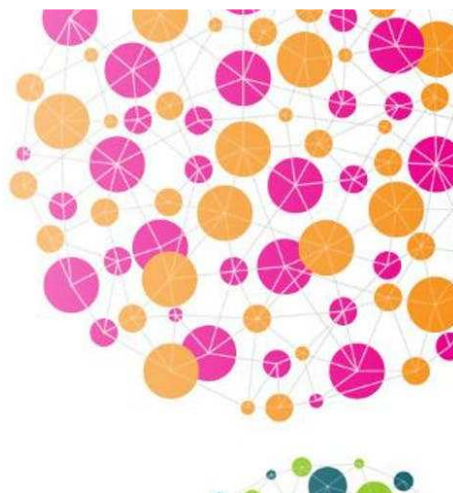


Science week:

8-17 March
**British
Science
Week
2019**



British Science Week takes place this half-term. The week will see opportunities for the children to undertake a range of science activities across the school.

Polite reminder:

I'd like to remind everyone that we do not allow dogs on site with the exception of guide dogs. This includes dogs on leads and those held in their owner's arms. Thank you for your cooperation with this.



No dogs
except guide dogs

Dates for the diary:

PTA Curry/Quiz Night	Friday 1 st March
World Book Day	Thursday 7 th March
PTA Storytelling (Years R to 3)	Friday 8 th March
Last day of Spring Term	Friday 5 th April
First day of Summer Term	Tuesday 23 rd April
Festival of Music	Friday 26 th April (pm)
Warren Barn week (Year 5)	w/c 29 th April
Half-term	w/c 27 th May
Inset days – school closed to children	3 rd and 4 th June
PGL (Year 6)	14 th -17 th June
Summer Fête	Saturday 20 th July
Last day of Summer Term	Thursday 25 th July